

閥調式鉛酸蓄電池(VRLA)

PL20-24 (24V20AH)

規格 Type

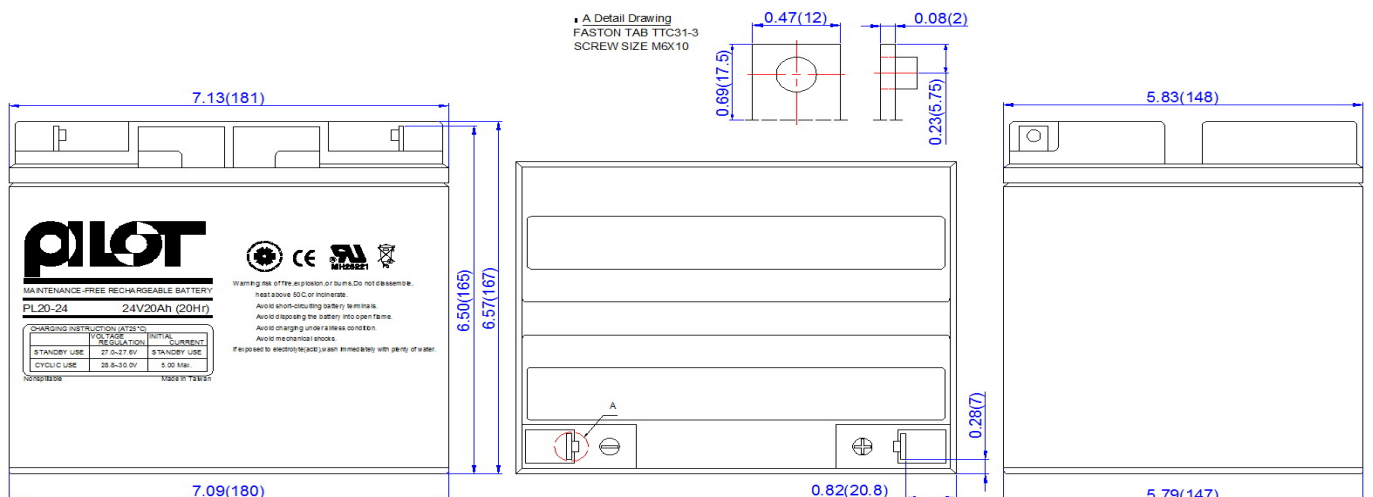
額定電壓 Rated Voltage	12V	
額定容量 Rated Capacity	20.0AH/20Hr/21.0V	端子 Terminal:螺栓(M6 Bolt)
尺寸 Dimension	長度 Length	181±1mm(7.13in)
	寬度 Width	148±1mm(5.83in)
	高度 Height	167±1mm(6.57in)
	總高度 Total Height	167±1mm(6.57in)
重量 Weight		11.6kg(25.52Pounds)
電槽材質 Container Material	ABS,UL 94V-0 or UL 94-HB 抗酸、抗油、防震 Resist acid, resist oil, resist vibration	氧氣指數 Index of oxygen L.O.I>28%
電解液型式 Type of electrolyte	AGM 不外漏 Non-spillable	



特性 Properties

容量 Capacity 25°C(77°F)	20 小時率 20HR of 1.00A to 21.0V	20.0AH
	5 小時率 5HR of 3.24A to 21.0V	16.2AH
	1 小時率 1HR of 13.00A to 21.0V	13.0AH
	0.5 小時率 0.5HR of 21.00A to 21.0V	10.5AH
內阻 Internal Resistance (at 1KHz)	完全充電 Full Charge at 25°C(77°F)	大約 Approx.22.0mΩ
容量受溫度影響 The capacity will be effected by temperature	40°C(104°F)	105%(20HR to 21.0AH)
	25°C(77°F)	100%(20HR to 20.0AH)
	0°C(32°F)	85%(20HR to 17.0AH)
	-20°C(-4°F)	60%(20HR to 12.0AH)
自我放電 Self-discharge	180 天後不到 20%，可以在 20°C (68°F) 下保存 6 個月；使用前需要完全充電。 Less than 20% after 180 days, it can be stored at 20°C (68°F) for 6 months; it needs to be fully charged before use.	
最大放電電流 5 秒 Maximum Discharge Current at 5 Sec	300.0A(15CA)	
浮充 Float Charging	電壓 Voltage	27.3±0.30V 25°C(77°F)
	電流 Current	6.00A(0.3CA)
循環充電 Cyclic Charging	電壓 Voltage	29.4±0.60V 25°C(77°F)
	電流 Current	5.00A(0.25CA)
操作溫度 Operation Temperature Range	充電 Charge/放置 Storage:-15~40°C(5~104°F)，放電 Discharge:-20~50°C(-4~122°F)	
期待壽命 Expected Life	25°C(77°F) 3~5 years	

尺寸 Dimension: inch (mm)



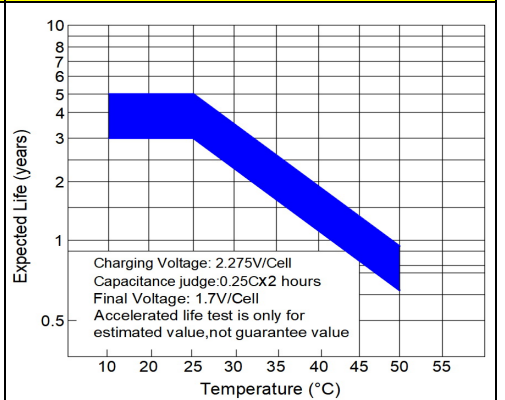
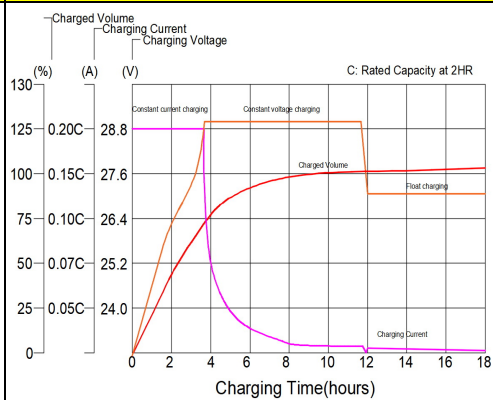
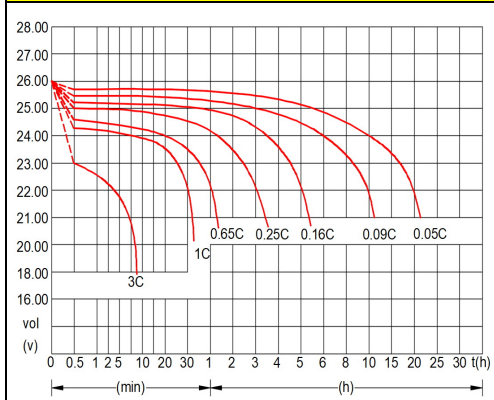
PL20-24 PROPERTIES

Amperes and watts per battery at 25°C (77°F)

F.V.	Time	Minutes										Hours							
	Item	1	5	10	15	20	25	30	35	40	45	1	2	3	4	5	8	10	20
1.60 (19.20)	A	95.20	60.40	44.60	36.20	31.80	26.60	23.80	21.60	20.00	18.20	14.00	8.00	5.60	4.40	3.56	2.33	2.04	1.12
	W	1999	1268	937	796	700	612	547	497	460	419	322	187	131	103	85	56	49	27
1.65 (19.80)	A	83.80	55.40	41.20	34.00	29.60	25.20	22.40	20.40	18.80	17.20	13.60	7.90	5.53	4.30	3.52	2.28	2.00	1.10
	W	1760	1163	865	748	651	580	515	469	432	396	313	185	129	101	84	55	48	26
1.70 (20.40)	A	76.00	53.20	38.20	32.00	27.80	24.00	21.60	19.60	17.80	16.80	13.20	7.70	5.40	4.15	3.44	2.23	1.88	1.04
	W	1596	1117	802	704	612	552	497	451	409	386	304	180	126	97	83	53	45	25
1.75 (21.00)	A	66.60	50.40	35.00	29.80	26.40	23.00	21.00	18.80	17.20	16.00	13.00	7.30	5.07	3.95	3.24	2.18	1.80	1.00
	W	1399	1058	735	656	581	529	483	432	396	368	299	171	119	92	78	52	43	24
1.80 (21.60)	A	59.00	45.60	31.80	27.20	24.20	21.80	19.60	18.00	16.40	15.60	12.60	7.00	5.00	3.85	3.16	2.10	1.76	0.98
	W	1239	958	668	598	532	501	451	414	377	359	290	164	117	90	76	50	42	24
1.83 (21.96)	A	55.00	42.00	25.20	23.40	20.20	18.60	17.40	15.60	14.00	13.40	12.00	6.90	4.73	3.65	2.96	2.05	1.64	0.92
	W	1155	882	529	515	444	428	400	359	322	308	276	161	111	85	71	49	39	22

用途 Application	密封結構 Seal construction	穩定性 Stabilities
☆電動代步車 Electric scooter ☆電動機車 Motor vehicles ☆電動腳踏車 Electric bicycle ☆各種電動玩具 All kinds of electric toys	☆沒有漏酸的危險，氣體釋放率超低，不需加水，能防止電解液乾枯或產生層化現象(於放電時)再組合率大於98% Non-spillable, no leaking danger, the gas consumption rate is low, no need to replenish water, can avoid acid lack or crystallization problem during discharge, the recombination rate is higher than 98% ☆端子採用合金銅鍍錫材質 Terminals are tin-plated copper alloy material.	☆正負極板是鉛鈣合金 Positive, negative's plates are all Calcium-Lead alloy. ☆塑殼是防火 ABS 或等級是 UL 94V-0 L.O.I>28% The plastic material is fire-resistance ABS or same grade of UL 94V-0 L.O.I >28% ☆組立用螺絲採用 M6 螺絲，扭力從 5N-m 至 8N-m(最大)採用不銹鋼材質，堅固耐用。 Assembling screws using M6 screws, torque from 5N-m to 8N-m (maximum) made of stainless steel, durable.

放電特性(25°C) Discharge characteristic at different rates(25°C)	定電壓充電(25°C) Charging Characteristics	浮充期待壽命 Float Service Life
---	---	------------------------------



溫度與充電電壓關係 Relationship Between Temperature And Charging Voltage	容量保持特性 Capacity Retention Characteristics	壽命循環關係 Cycle Service Life
--	--	------------------------------

