

閥調式鉛酸蓄電池(VRLA)

PL5-12 (12V5AH)

規格 Type

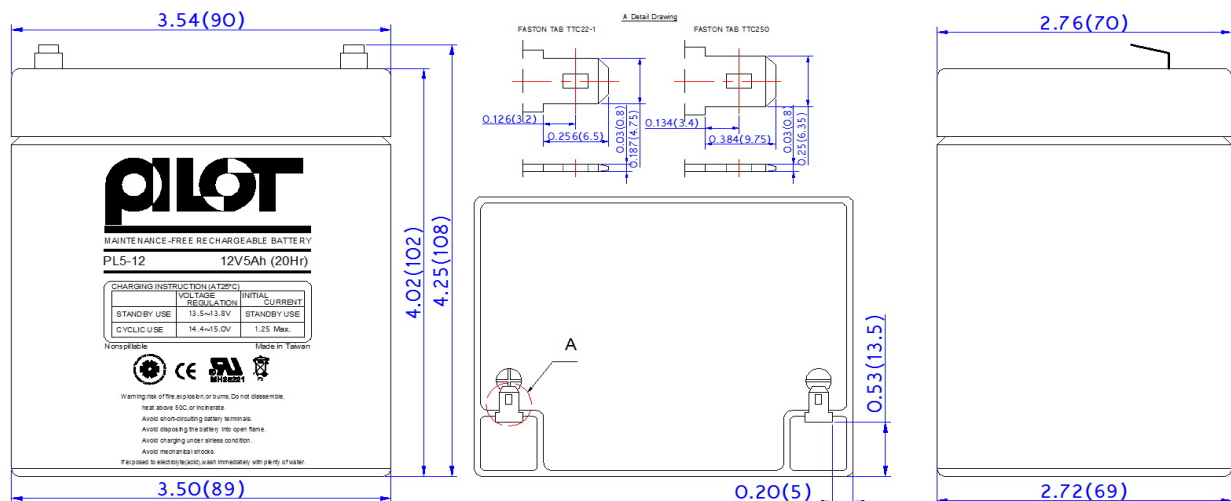
額定電壓 Rated Voltage	12V	
額定容量 Rated Capacity	5.0AH/20Hr/10.5V	
尺寸 Dimension	長度 Length	90±1mm(3.54in)
	寬度 Width	70±1mm(2.76in)
	高度 Height	102±1mm(4.02in)
	總高度 Total Height	108±1mm(4.25in)
重量 Weight	1.68kg(3.696Pounds)	
電槽材質 Container Material	ABS,UL 94V-0 or UL 94-HB 抗酸、抗油、防震 Resist acid, resist oil, resist vibration	氧氣指數 Index of oxygen L.O.I>28%
電解液型式 Type of electrolyte	AGM 不外漏 Non-spillable	



特性 Properties

容量 Capacity 25°C(77°F)	20 小時率 20HR of 0.25A to 10.5V	5.00AH
	5 小時率 5HR of 0.81A to 10.5V	4.05AH
	1 小時率 1HR of 3.25A to 10.5V	3.25AH
	0.5 小時率 0.5HR of 5.25A to 10.5V	2.63AH
內阻 Internal Resistance (at 1KHz)	完全充電 Full Charge at 25°C(77°F)	大約 Approx.22.0mΩ
容量受溫度影響 The capacity will be effected by temperature	40°C(104°F)	105%(20HR to 5.25AH)
	25°C(77°F)	100%(20HR to 5.00AH)
	0°C(32°F)	85%(20HR to 4.25AH)
	-20°C(-4°F)	60%(20HR to 3.00AH)
自我放電 Self-discharge	180 天後不到 20%，可以在 20°C (68°F) 下保存 6 個月；使用前需要完全充電。 Less than 20% after 180 days, it can be stored at 20°C (68°F) for 6 months; it needs to be fully charged before use.	
最大放電電流 5 秒 Maximum Discharge Current at 5 Sec	75.0A(15CA)	
浮充 Float Charging	電壓 Voltage	13.65±0.15V 25°C(77°F)
	電流 Current	1.50A(0.3CA)
循環充電 Cyclic Charging	電壓 Voltage	14.70±0.30V 25°C(77°F)
	電流 Current	1.25A(0.25CA)
操作溫度 Operation Temperature Range	充電 Charge/放置 Storage:-15~40°C(5~104°F)，放電 Discharge:-20~50°C(-4~122°F)	
期待壽命 Expected Life	25°C(77°F) 3~5 years	

尺寸 Dimension: inch (mm)



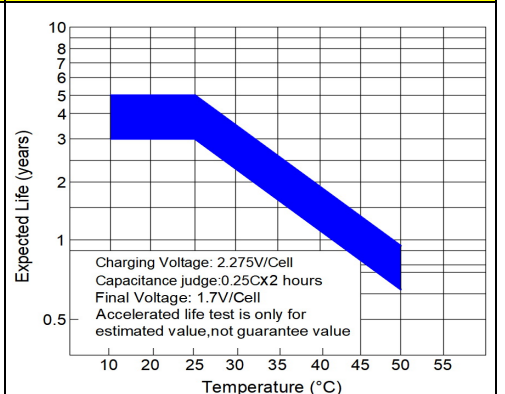
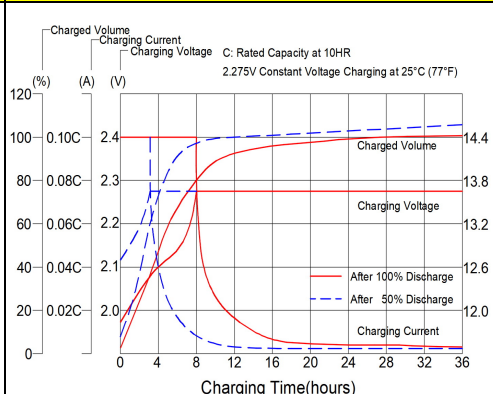
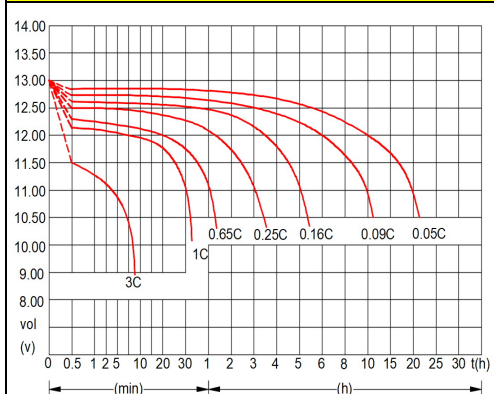
PL5-12 PROPERTIES

Amperes and watts per battery at 25°C (77°F)

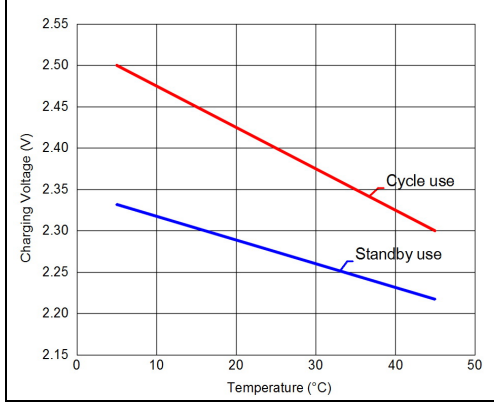
F.V.	Time Item	Minutes										Hours							
		1	5	10	15	20	25	30	35	40	45	1	2	3	4	5	8	10	20
1.60 (9.60)	A	23.80	15.10	11.15	9.05	7.95	6.65	5.95	5.40	5.00	4.55	3.50	2.00	1.40	1.10	0.89	0.58	0.51	0.28
	W	249.9	158.6	117.1	99.6	87.5	76.5	68.4	62.1	57.5	52.3	40.3	23.4	16.4	12.9	10.7	7.0	6.1	3.4
1.65 (9.90)	A	20.95	13.85	10.30	8.50	7.40	6.30	5.60	5.10	4.70	4.30	3.40	1.98	1.38	1.08	0.88	0.57	0.50	0.28
	W	220.0	145.4	108.2	93.5	81.4	72.5	64.4	58.7	54.1	49.5	39.1	23.1	16.2	12.6	10.6	6.8	6.0	3.3
1.70 (10.20)	A	19.00	13.30	9.55	8.00	6.95	6.00	5.40	4.90	4.45	4.20	3.30	1.93	1.35	1.04	0.86	0.56	0.47	0.26
	W	199.5	139.7	100.3	88.0	76.5	69.0	62.1	56.4	51.2	48.3	38.0	22.5	15.8	12.1	10.3	6.7	5.6	3.1
1.75 (10.50)	A	16.65	12.60	8.75	7.45	6.60	5.75	5.25	4.70	4.30	4.00	3.25	1.83	1.27	0.99	0.81	0.54	0.45	0.25
	W	174.8	132.3	91.9	82.0	72.6	66.1	60.4	54.1	49.5	46.0	37.4	21.4	14.8	11.6	9.7	6.5	5.4	3.0
1.80 (10.80)	A	14.75	11.40	7.95	6.80	6.05	5.45	4.90	4.50	4.10	3.90	3.15	1.75	1.25	0.96	0.79	0.53	0.44	0.25
	W	154.9	119.7	83.5	74.8	66.6	62.7	56.4	51.8	47.2	44.9	36.2	20.5	14.6	11.3	9.5	6.3	5.3	2.9
1.83 (10.98)	A	13.75	10.50	6.30	5.85	5.05	4.65	4.35	3.90	3.50	3.35	3.00	1.73	1.18	0.91	0.74	0.51	0.41	0.23
	W	144.4	110.3	66.2	64.4	55.6	53.5	50.0	44.9	40.3	38.5	34.5	20.2	13.8	10.7	8.9	6.2	4.9	2.8

用途 Application	密封結構 Seal construction	穩定性 Stabilities
<ul style="list-style-type: none"> ☆廣播電視系統 Broadcast television systems ☆UPS 緊急備用電源 UPS emergency backup power ☆通信系統 Communication back-up systems ☆電力系統 Power systems ☆緊急照明器材 Emergency lighting equipment ☆防火、保全系統 Fire, security systems 	<ul style="list-style-type: none"> ☆沒有漏酸的危險，氣體釋放率超低，不需加水，能防止電解液乾枯或產生層化現象(於放電時)再組合率大於98% Non-spillable, no leaking danger, the gas consumption rate is low, no need to replenish water, can avoid acid lack or crystallization problem during discharge, the recombination rate is higher than 98% ☆端子採用合金銅鍍錫材質 Terminals are tin-plated copper alloy material. 	<ul style="list-style-type: none"> ☆正負極板是鉛鈣合金 Positive, negative's plates are all Calcium-Lead alloy. ☆塑殼是防火 ABS 或等級是 UL 94V-0 L.O.I>28% The plastic material is fire-resistance ABS or same grade of UL 94V-0 L.O.I >28%

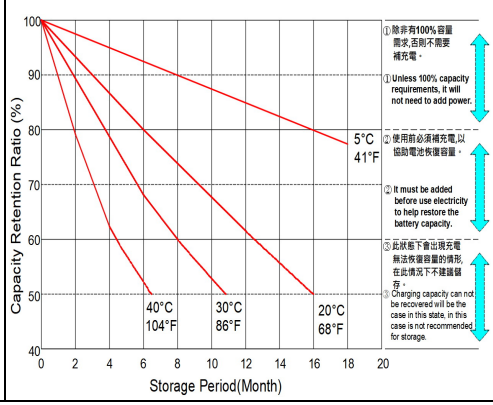
放電特性(25°C) Discharge characteristic at different rates(25°C)	定電壓充電(25°C) Charging Characteristics	浮充期待壽命 Float Service Life
---	---	------------------------------



溫度與充電電壓關係 Relationship Between Temperature And Charging Voltage
--



容量保持特性 Capacity Retention Characteristics
--



壽命循環關係 Cycle Service Life

