

閥調式鉛酸蓄電池(VRLA)

PL7.5-12 (12V7.5AH)

規格 Type

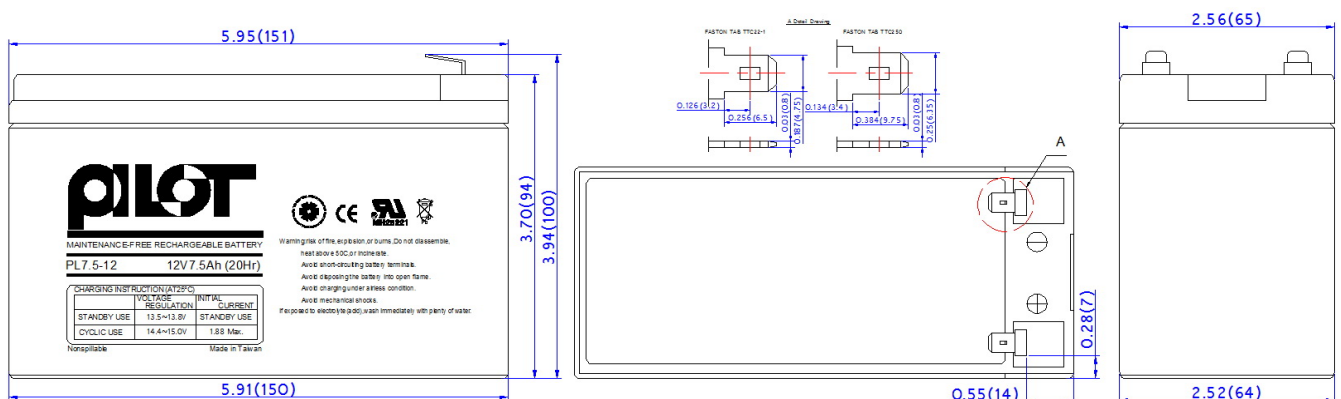
額定電壓 Rated Voltage	12V	
額定容量 Rated Capacity	7.5AH/20Hr/10.5V	
尺寸 Dimension	長度 Length	151±1mm(5.95in)
	寬度 Width	65±1mm(2.56in)
	高度 Height	94±1mm(3.70in)
	總高度 Total Height	100±1mm(3.94in)
重量 Weight	2.25kg(4.95Pounds)	
電槽材質 Container Material	ABS,UL 94V-0 or UL 94-HB 抗酸、抗油、防震 Resist acid, resist oil, resist vibration	氧氣指數 Index of oxygen L.O.I>28%
電解液型式 Type of electrolyte	AGM 不外漏 Non-spillable	



特性 Properties

容量 Capacity 25°C(77°F)	20 小時率 20HR of 0.375A to 10.5V	7.50AH
	5 小時率 5HR of 1.22A to 10.5V	6.10AH
	1 小時率 1HR of 4.88A to 10.5V	4.88AH
	0.5 小時率 0.5HR of 7.88A to 10.5V	3.94AH
內阻 Internal Resistance (at 1KHz)	完全充電 Full Charge at 25°C(77°F)	大約 Approx.18.5mΩ
容量受溫度影響 The capacity will be effected by temperature	40°C(104°F)	105%(20HR to 7.88AH)
	25°C(77°F)	100%(20HR to 7.50AH)
	0°C(32°F)	85%(20HR to 6.38AH)
	-20°C(-4°F)	60%(20HR to 4.50AH)
自我放電 Self-discharge	180 天後不到 20%，可以在 20°C (68°F) 下保存 6 個月；使用前需要完全充電。 Less than 20% after 180 days, it can be stored at 20°C (68°F) for 6 months; it needs to be fully charged before use.	
最大放電電流 5 秒 Maximum Discharge Current at 5 Sec	112.5A(15CA)	
浮充 Float Charging	電壓 Voltage	13.65±0.15V 25°C(77°F)
	電流 Current	2.25A(0.3CA)
循環充電 Cyclic Charging	電壓 Voltage	14.70±0.30V 25°C(77°F)
	電流 Current	1.88A(0.25CA)
操作溫度 Operation Temperature Range	充電 Charge/放置 Storage:-15~40°C(5~104°F)，放電 Discharge:-20~50°C(-4~122°F)	
期待壽命 Expected Life	25°C(77°F) 3~5 years	

尺寸 Dimension: inch (mm)



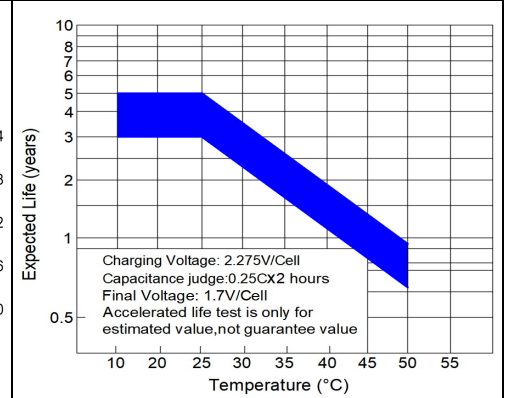
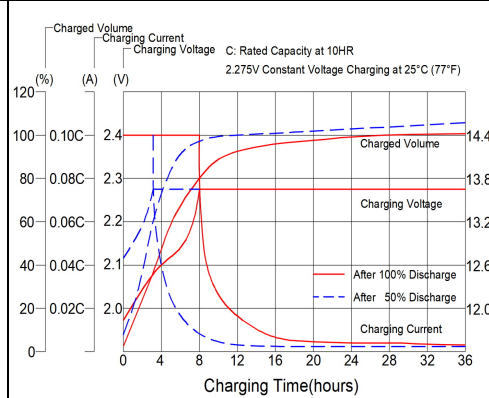
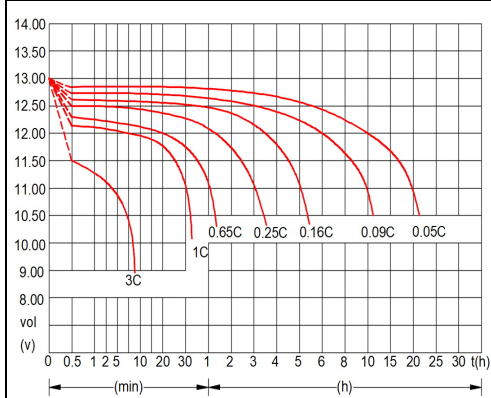
PL7.5-12 PROPERTIES

Amperes and watts per battery at 25°C (77°F)

F.V.	Time Item	Minutes										Hours							
		1	5	10	15	20	25	30	35	40	45	1	2	3	4	5	8	10	20
1.60 (9.60)	A	35.70	22.65	16.73	13.58	11.93	9.98	8.93	8.10	7.50	6.83	5.25	3.00	2.10	1.65	1.34	0.87	0.77	0.42
	W	375	238	176	149	131	115	103	93	86	78	60.4	35.1	24.6	19.3	16.0	10.5	9.2	5.0
1.65 (9.90)	A	31.43	20.78	15.45	12.75	11.10	9.45	8.40	7.65	7.05	6.45	5.10	2.96	2.08	1.61	1.32	0.85	0.75	0.41
	W	330	218	162	140	122	109	97	88	81	74	58.7	34.7	24.3	18.9	15.8	10.2	9.0	5.0
1.70 (10.20)	A	28.50	19.95	14.33	12.00	10.43	9.00	8.10	7.35	6.68	6.30	4.95	2.89	2.03	1.56	1.29	0.83	0.71	0.39
	W	299	209	150	132	115	104	93	85	77	72	56.9	33.8	23.7	18.2	15.5	10.0	8.5	4.7
1.75 (10.50)	A	24.98	18.90	13.13	11.18	9.90	8.63	7.88	7.05	6.45	6.00	4.88	2.74	1.90	1.48	1.22	0.82	0.68	0.375
	W	262	198	138	123	109	99	91	81	74	69	56.1	32.0	22.2	17.3	14.6	9.8	8.1	4.5
1.80 (10.80)	A	22.13	17.10	11.93	10.20	9.08	8.18	7.35	6.75	6.15	5.85	4.73	2.63	1.88	1.44	1.19	0.79	0.66	0.37
	W	232	180	125	112	100	94	85	78	71	67	54.3	30.7	21.9	16.9	14.2	9.5	7.9	4.4
1.83 (10.98)	A	20.63	15.75	9.45	8.78	7.58	6.98	6.53	5.85	5.25	5.03	4.50	2.59	1.78	1.37	1.11	0.77	0.62	0.35
	W	217	165	99	97	83	80	75	67	60	58	51.8	30.3	20.8	16.0	13.3	9.2	7.4	4.1

用途 Application	密封結構 Seal construction	穩定性 Stabilities
<ul style="list-style-type: none"> ☆廣播電視系統 Broadcast television systems ☆UPS 緊急備用電源 UPS emergency backup power ☆通信系統 Communication back-up systems ☆電力系統 Power systems ☆緊急照明器材 Emergency lighting equipment ☆防火、保全系統 Fire, security systems 	<ul style="list-style-type: none"> ☆沒有漏酸的危險，氣體釋放率超低，不需加水，能防止電解液乾枯或產生層化現象(於放電時)再組合率大於98% Non-spillable, no leaking danger, the gas consumption rate is low, no need to replenish water, can avoid acid lack or crystallization problem during discharge, the recombination rate is higher than 98% ☆端子採用合金銅鍍錫材質 Terminals are tin-plated copper alloy material. 	<ul style="list-style-type: none"> ☆正負極板是鉛鈣合金 Positive, negative's plates are all Calcium-Lead alloy. ☆塑殼是防火 ABS 或等級是 UL 94V-0 L.O.I>28% The plastic material is fire-resistance ABS or same grade of UL 94V-0 L.O.I >28%

放電特性(25°C) Discharge characteristic at different rates(25°C)	定電壓充電(25°C) Charging Characteristics	浮充期待壽命 Float Service Life
---	---	------------------------------



溫度與充電電壓關係 Relationship Between Temperature And Charging Voltage	容量保持特性 Capacity Retention Characteristics	壽命循環關係 Cycle Service Life
--	--	------------------------------

